

ALASKA DEPARTMENT OF FISH AND GAME
DIVISION OF COMMERCIAL FISHERIES
NEWS RELEASE



Cora Campbell, Commissioner
Jeff Regnart, Director



Contact: Pat Shields, Area Management Biologist; 43961 Kalifornsky Beach Rd, Suite B Phone: (907) 262-9368 Date Issued: May 2, 2014	Aaron Dupuis, Asst. Area Management Biologist Soldotna, AK 99669 Fax: (907) 262-4709 Time: 10:00 a.m.
----------------------------------------------------------------------------------------------------------------------------------------------	----------------------------------------------------------------------------------------------------------------

UPPER COOK INLET COMMERCIAL FISHING ANNOUNCEMENT No. 1
EMERGENCY ORDER NUMBER 2S-01-14

Upper Cook Inlet Commercial Fishing Announcement No. 1 closes commercial salmon fishing in the Northern District of Upper Cook Inlet on Monday, May 26, 2014.

This announcement also reduces the open fishing time from twelve hours to six hours per day for the remaining four commercial king salmon fishing periods scheduled in the Northern District of Upper Cook Inlet for the 2014 season. The fishing periods affected by this announcement occur on the following four Mondays: June 2, June 9, June 16, and June 23, 2014. On these days, commercial fishing with set gillnets will be open in all waters of the Northern District of Upper Cook Inlet from 7:00 a.m. until 1:00 p.m. only; except commercial salmon fishing remains closed for the entire 2014 directed king salmon fishery in that portion of the General Subdistrict of the Northern District from a point at the wood chip dock located approximately three miles south of Tyonek at 61° 02.77' N. lat., 151° 10.04' W. long., to the Susitna River (Figure 1). All areas will return to their normal fishing schedule of 7:00 a.m. to 7:00 p.m. on Mondays and Thursdays, beginning on Thursday, June 26, 2014.

King salmon originating from the Chuitna River drainage remain a stock of management concern. As a result of this finding, the king salmon sport fishery in this drainage has been closed since the 2011 season. The *Northern District King Salmon Management Plan* (5 AAC 21.366) specifies that if the Chuitna River is closed to sport fishing, the commissioner shall close the commercial king salmon fishery, by emergency order, from the wood chip dock to the Susitna River. This emergency order implements that mandatory closure. Escapement monitoring of king salmon stocks throughout the Northern District in 2013 showed some improvement, but in general the trend of low abundance continues. With a below-average outlook for the upcoming season, and uncertainty over how quickly king salmon abundance may rebound, both sport and commercial fisheries in the Northern Cook Inlet area will be managed conservatively during the 2014 season.

The closure of the May 26 commercial fishing period and the reduction in fishing time for the remaining four fishing periods is intended to provide additional escapement of king salmon in streams throughout the Northern District.

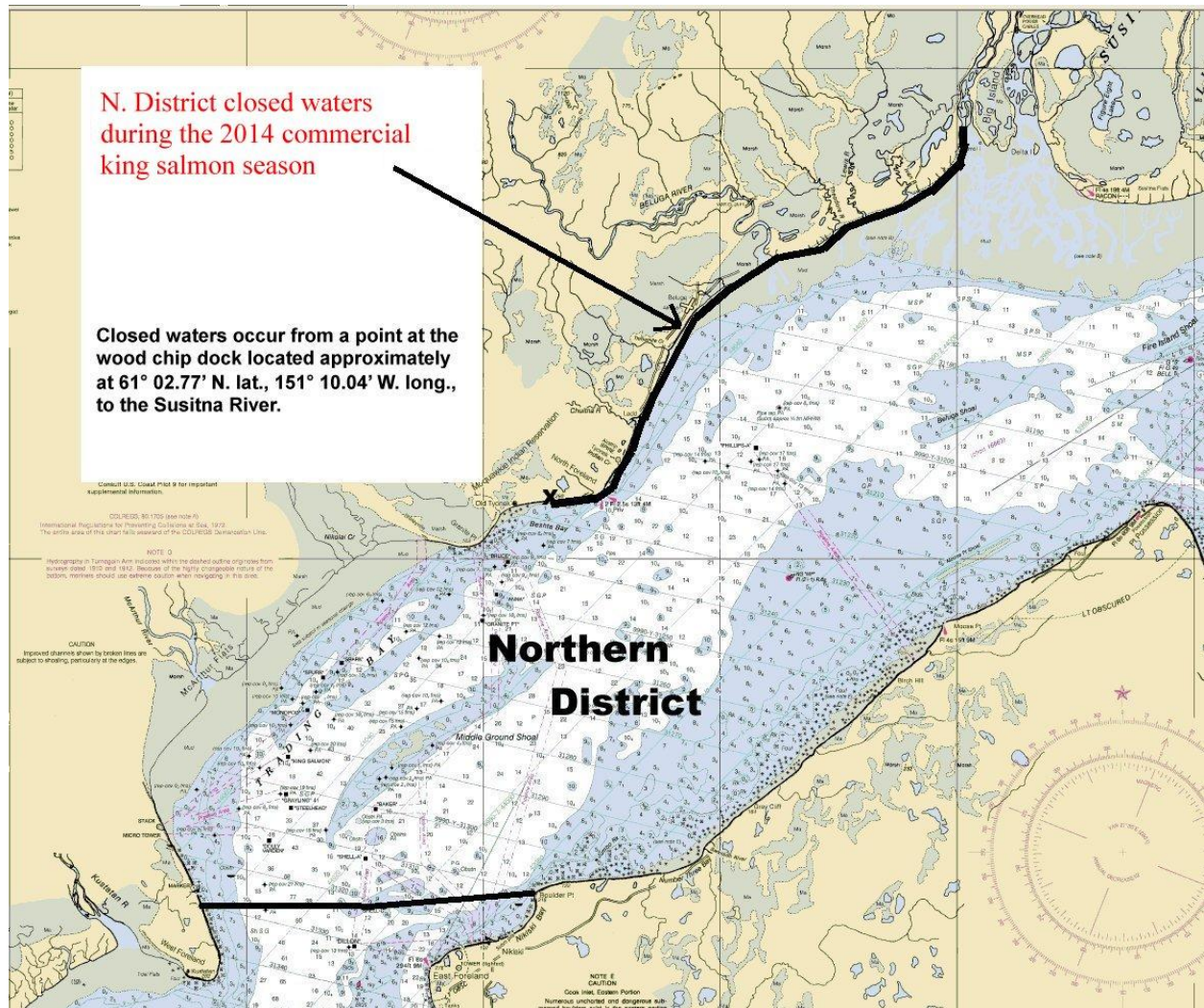


Figure 1. Map of the area closed to commercial fishing during the 2014 Northern District set gillnet directed king salmon fishery.